

ChM produces and distributes advanced medical solutions in 3 main divisions:



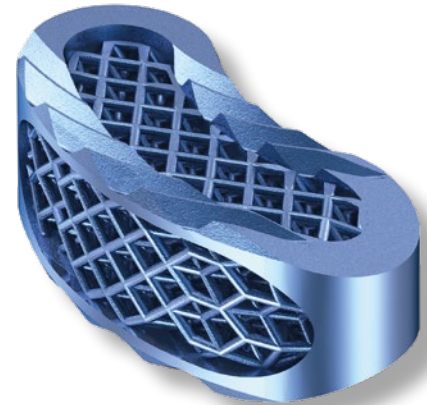
Comprehensive portfolio of products for traumatology, including systems designed for fractures fixation and deformities correction of extremities and pelvis.



Wide range of advanced solutions for cervical and thoraco-lumbar stabilization of spine, including pedicle screw systems for open and MIS procedures, various interbody devices and fixation plates.



Instruments and implants for cranio-maxillofacial surgeries, dedicated for fracture fixations, reconstructions, distractions and orthognathic surgeries.



## 3D-Ti TLIF INTERVERTEBRAL CAGE

3.6930.0xx; 3.6930.5xx  
3.6932.0xx; 3.6932.5xx



To bring medical solutions

[www.chm.eu](http://www.chm.eu)

Document No B/K-06  
Review date P-001-02.10.2020

## 3D-Ti TLIF INTERVERTEBRAL CAGE

CHARSPINE system 3D-Ti  
3D Titanium Trabecular Cage System

# 3D-TI TLIF INTERVERTEBRAL CAGE

## Safe

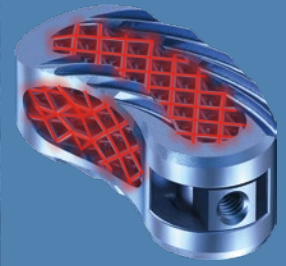
- the arc-shaped serration to prevent migration and facilitate insertion of the cage
- open design improves osseointegration and bone in-growth
- made in 3D printing technology of highly biocompatible titanium alloy
- easy to navigate in X-ray imaging
- the kidney-like shape for perfect fit in the curvature of the vertebral bodies

## Functional

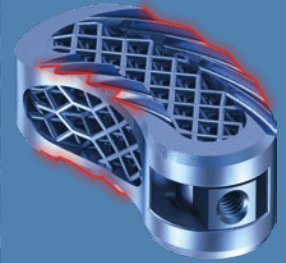
- internal 3D structure for spontaneous bone in-growth
- colour-coded implants and corresponding trials
- the wedge-shaped anterior part facilitates insertion of the implant
- simple and functional instrument set (the same for 3D-Ti and PEEK implants)

## Universal

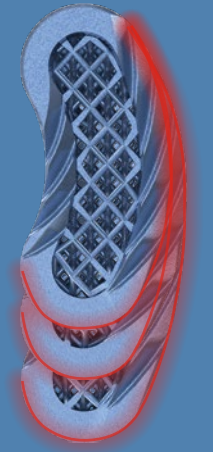
- three lengths: 26, 30 and 35mm
- height from 7 to 16mm
- lordotic (5°) and straight version



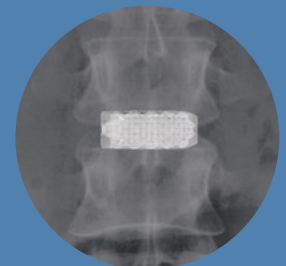
3D design



profiled serration



wide range of sizes



easy assessment of the implant position