

ChM produces and distributes advanced medical solutions in 3 main divisions:



Comprehensive portfolio of products for traumatology, including systems designed for fractures fixation and deformities correction of extremities and pelvis.



Wide range of advanced solutions for cervical and thoraco-lumbar stabilization of spine, including pedicle screw systems for open and MIS procedures, various interbody devices and fixation plates.



Instruments and implants for cranio-maxillofacial surgeries, dedicated for fracture fixations, reconstructions, distractions and orthognathic surgeries.



3D-Ti CERVICAL INTERVERTEBRAL CAGE

3.6935.0xx; 3.6937.0xx
3.6938.0xx; 3.6940.0xx
3.6941.0xx; 3.6943.0xx
3.6944.0xx; 3.6946.0xx



To bring medical solutions

www.chm.eu

Document No B/K-07
Review date P-001-02.10.2020

3D-Ti CERVICAL INTERVERTEBRAL CAGE

CHARSPINE system 3D-Ti
3D Titanium Trabecular Cage System

3D-TI CERVICAL INTERVERTEBRAL CAGE

Safe

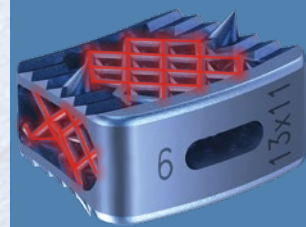
- shape ensures stability of the body-implant-body interconnection
- asymmetrical serration to prevent migration of the cage
- version with spikes anchoring the implant in the vertebral bodies
- made in 3D printing technology of highly biocompatible titanium alloy
- easy to navigate in X-ray imaging

Functional

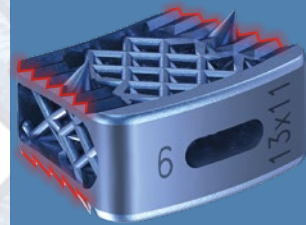
- internal 3D structure for spontaneous bone in-growth
- simple and quick implantation procedure (one instrument set for 3D-Ti and PEEK implants)

Universal

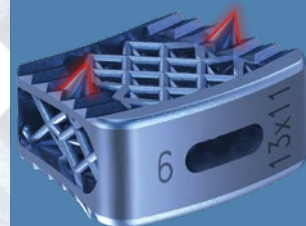
- three sizes: 13x11, 15x12, 17x13mm
- seven heights from 4 to 10mm
- angular and anatomical (convex) versions
- with and without spikes



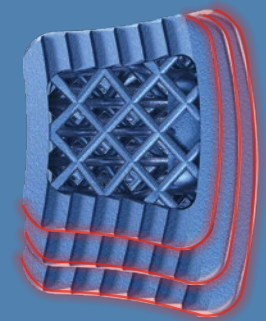
3D design



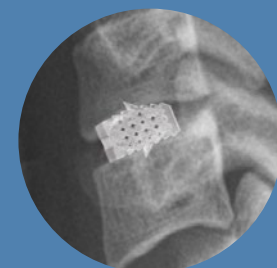
asymmetrical serration



also with spikes



wide range of sizes



easy assessment of the implant position