

ChM produces and distributes advanced medical solutions in 3 main divisions:



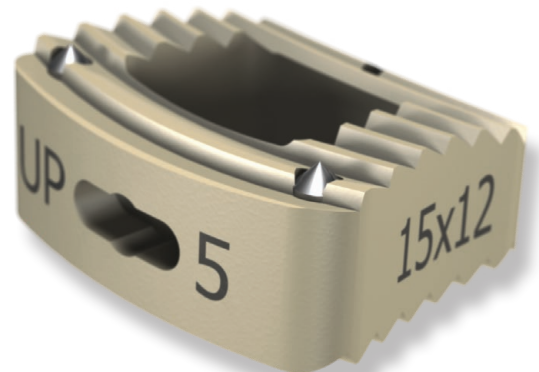
Comprehensive portfolio of products for traumatology, including systems designed for fractures fixation and deformities correction of extremities and pelvis.



Wide range of advanced solutions for cervical and thoraco-lumbar stabilization of spine, including pedicle screw systems for open and MIS procedures, various interbody devices and fixation plates.



Instruments and implants for cranio-maxillofacial surgeries, dedicated for fracture fixations, reconstructions, distractions and orthognathic surgeries.



INTERVERTEBRAL CERVICAL CAGE

8.4558.xxx 8.4585.xxx
8.4554.xxx 8.4583.xxx
8.4556.xxx 8.4581.xxx
8.4584.xxx
8.4582.xxx
8.4580.xxx
8.4559.xxx
8.4555.xxx
8.4557.xxx



INTER- VERTEBRAL CERVICAL CAGE



To bring medical solutions

www.chm.eu

Document No B/K-01
Review date P-001-10.08.2020

CHARSPINE *system 2*

INTERVERTEBRAL CERVICAL CAGE

Design aligned with anatomy

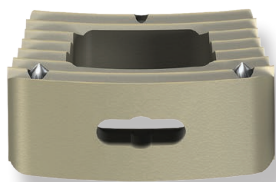
- three footprints: 13x11mm, 12x15mm and 17x13mm
- two profiles: lordotic and anatomic (one side convex) design
- seven heights in range from 4mm to 10mm
- large space inside the cage for autologous bone graft or bone substitute

Biocompatibility

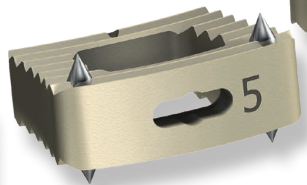
- made of biocompatible PEEK polymer with addition of radio-paque agent (6% of barium sulfate) making them visible under fluoroscopy

Safety-asymmetrical serrations on both sides of implant to prevent migration

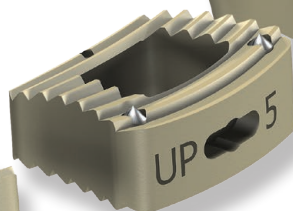
- also available in spiked version for even better protection against implant migration
- three tantalum markers ensure implant visibility under fluoroscopy



Lordotic cervical intervertebral cage

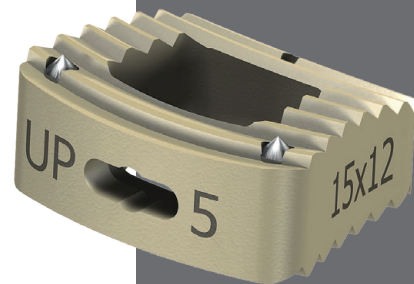
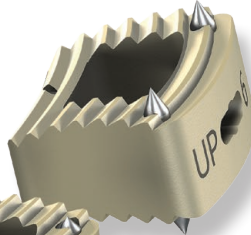


Lordotic cervical intervertebral cage (with spikes)



Convex cervical intervertebral cage

Convex cervical intervertebral cage (with spikes)



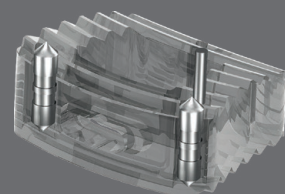
Anatomical design



Large space in the cage



Implant surfaces with asymmetrical teeth



Radiopaque tantalum markers