

ChM produces and distributes advanced medical solutions in 3 main divisions:

ChM[®]
SPINE

ChM[®]
TRAUMA

Comprehensive portfolio of products for traumatology, including systems designed for fractures fixation and deformities correction of extremities and pelvis.

ChM[®]
SPINE

Wide range of advanced solutions for cervical and thoraco-lumbar stabilization of spine, including pedicle screw systems for open and MIS procedures, various interbody devices and fixation plates.

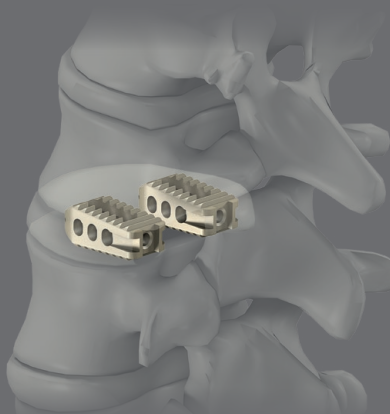
ChM[®]
**CRANIO
FACIAL**

Instruments and implants for cranio-maxillofacial surgeries, dedicated for fracture fixations, reconstructions, distractions and orthognathic surgeries.



PLIF PEEK CAGE

8.3988.xxx
8.3989.xxx



To bring medical solutions

www.chm.eu

Document No B/K-02
Review date P-001-04.08.2020

PLIF PEEK
C A G E

CHARSPINE *system 2*

PLIF PEEK CAGE

Design aligned with anatomy

- atraumatic, rounded, bullet-like shaped anterior part of the implant in order to facilitate the implant insertion
- intervertebral cage system consists of three angular versions: 0°, 4°, 7° and one anatomical version with convex superior and inferior retaining surface
- this range of implants offers the surgeon a wide selection of implant sizes adjusted to the patient's anatomy and pathology treated
- central hole for bone graft and side holes which provide ingrowth of bone tissue

Serrations

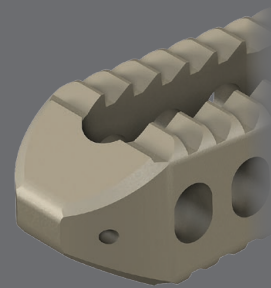
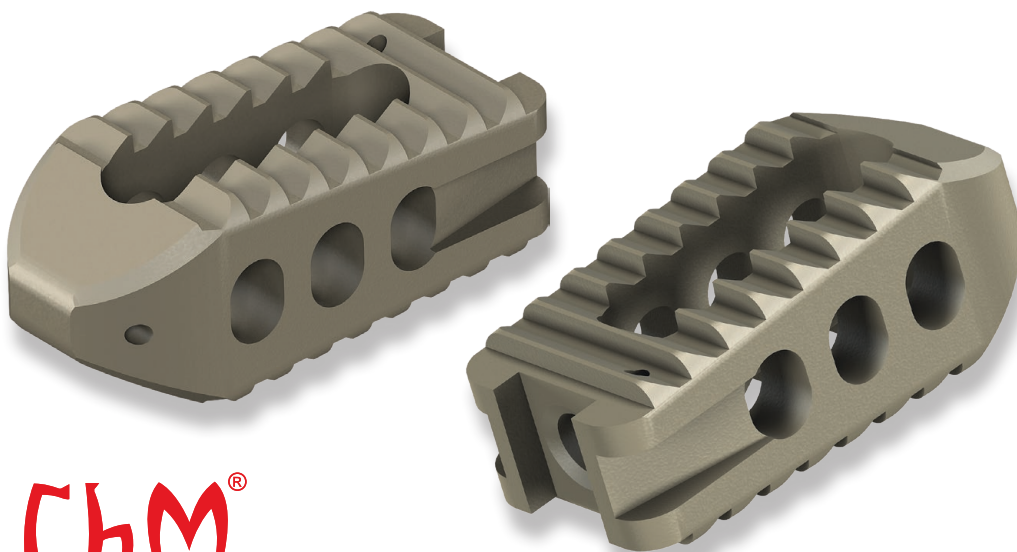
- serrated superior and inferior surfaces designed to provide stability by anchoring in the vertebral endplates

Wide range of sizes

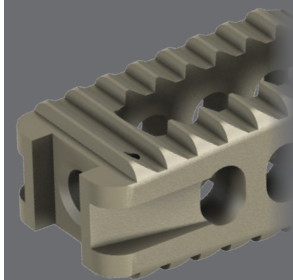
- two implants lengths - 20 and 25 mm
- ten heights in the range from 9 to 18 mm in 1 mm increments

PEEK

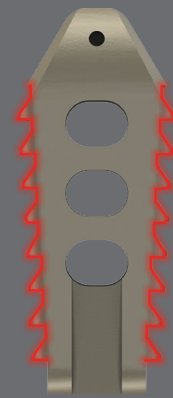
- stiffness of biocompatible PEEK polymer approximates the host bone, which provides ideal load sharing attributes
- radiolucency of PEEK polymer offers an accurate visualization and assessment of the fusion
- radiopaque tantalum markers facilitate intraoperative X-Ray visualization of inserted implant



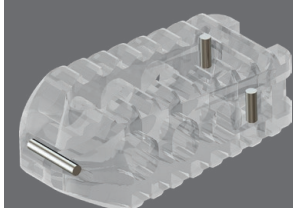
Anatomical design



Open design



Serrations



Radiopaque tantalum markers