

ChM produces and distributes advanced products in 3 main divisions:



Comprehensive portfolio of products for traumatology. Including systems designed for fractures fixation, deformity corrections associated with extremities and pelvis.



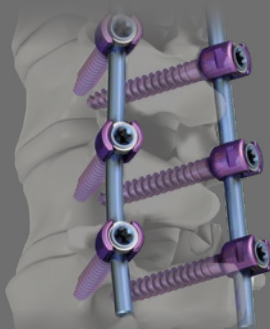
Wide range of advanced products for cervical and thoraco-lumbar stabilization of spine. Including pedicle screws systems for open and MIS procedures, various interbody devices and plates.



Medical devices and implants for cranio-maxillofacial. Dedicated for fracture fixations, reconstructions, distractions and orthognathic surgeries.

PEDICLE SCREW SYSTEM

3.615x.xxx
3.617x.xxx
3.653x.xxx



To bring medical solutions

www.chm.eu

Document No B/K-03
Review date P-002/26.06.2020



PEDICLE SCREW SYSTEM

CHARSPINE *system 2*

PEDICLE SCREW SYSTEM

Design aligned with the anatomy

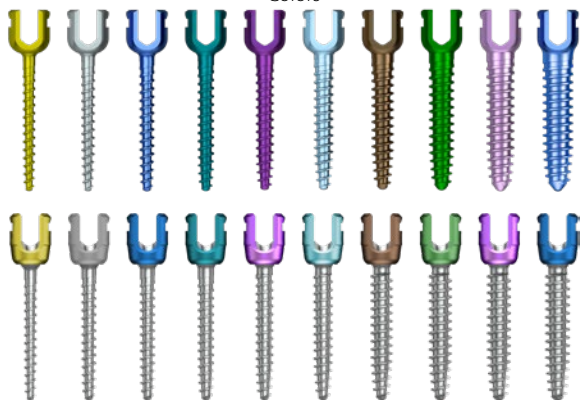
- low profile of the screw head reduces irritation of adjacent soft tissue
- conical, transitional bone thread, with distal cancellous and proximal cortical thread to improve screw purchase in bone
- blunt tip of the screw prevent soft tissue trauma when inserted bicortically
- multiple screw options: monoaxial, polyaxial, uniplanar and pelvic screws
- monoaxial, polyaxial and uniplanar screws available in standard and reduction head height options
- wide range of other implants of the system, i.e. rods, rod connectors, cross connectors, hooks, etc.

Safety

- tapered thread runout for increased screw endurance close to head
- locking mechanism with undercut thread ensures stability, maximizes rod grip and improves cross-threading resistance
- design of articulating mechanism of polyaxial screw improves resistance for head tilt

Ø4 Ø4.5 Ø5 Ø5.5 Ø6 Ø6.5 Ø7.5 Ø8.5 Ø9.5 Ø10.5

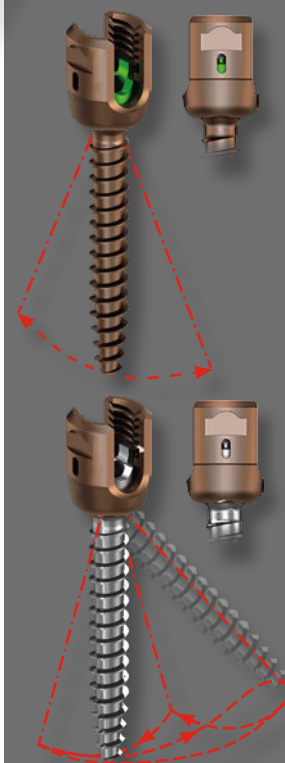
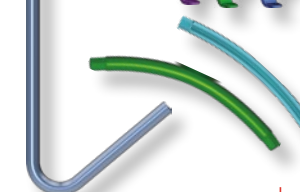
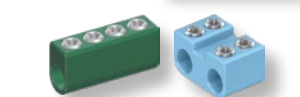
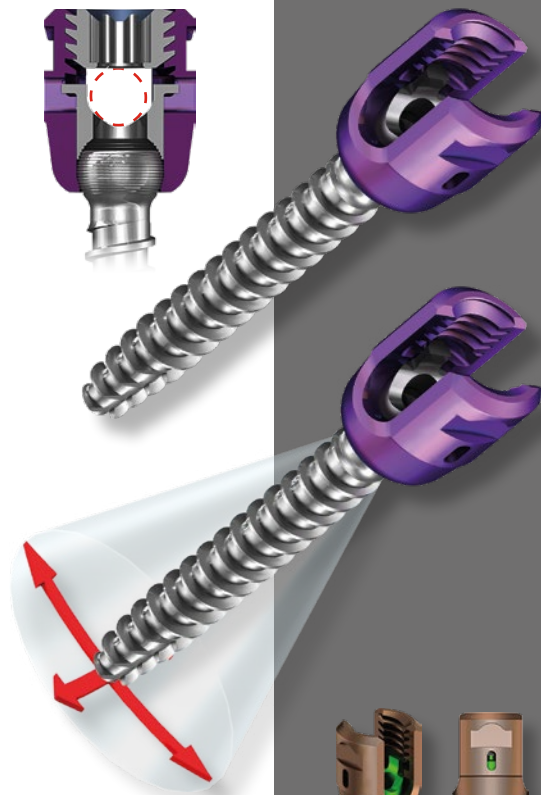
Colors



Monoaxia screws

Poliaxial screws

Poliaxial screws for pelvis



Low profile of the screw head

Polyaxial screws

Uniplanar screws

Screws for pelvis