

ChM produces and distributes advanced medical solutions in 3 main divisions:



Comprehensive portfolio of products for traumatology, including systems designed for fractures fixation and deformities correction of extremities and pelvis.



Wide range of advanced solutions for cervical and thoraco-lumbar stabilization of spine, including pedicle screw systems for open and MIS procedures, various interbody devices and fixation plates.

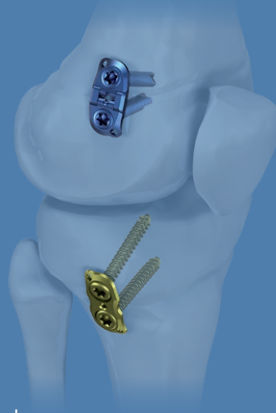


Instruments and implants for cranio-maxillofacial surgeries, dedicated for fracture fixations, reconstructions, distractions and orthognathic surgeries.



HE_{mi-e}PI_{physiodesis} PLATES

3.7098.xxx
3.7099.xxx
3.4159.xxx



To bring medical solutions

www.chm.eu

Document No B/P-07
Review date P-001-04.08.2020

HE_{mi-e}PI_{physiodesis} PLATES



HEPI PLATES

Design aligned with anatomy

- optimized anatomical profile
- fit to a wide range of anatomies
- provided long bones corrections by temporary inhibiting growth of the epiphyseal plate

Multiple plate options

- system consists of 3 types of plates:
 - hinged locking version
 - non-hinged locking version
 - non-locking version
- 2 and 4 hole plate type
- 12mm, 14mm and 16mm size variants

Hinged plate version

- plate fits the bone shape at the implantation site
- unlimited angular rotation
- lower implant stresses on screws and plate - lower risk of implant failure

Chamfered plate borders

- minimized soft-tissue irritation
- improved stress distribution

Locking hole design

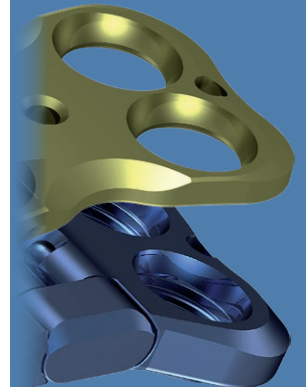
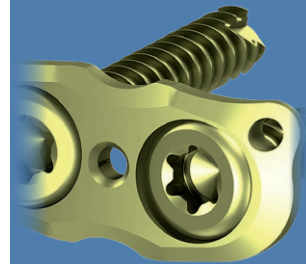
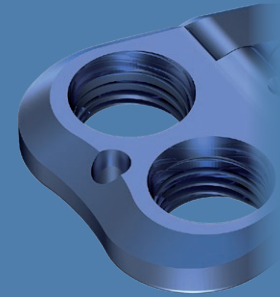
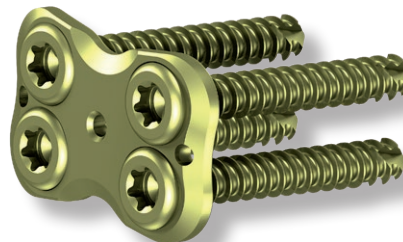
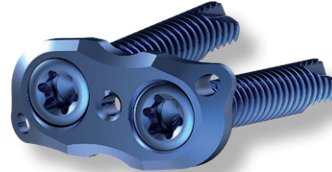
- the screws heads do not protrude above the surface of the plate what significantly reduces tissue irritation
- increased strength of the screw-to-plate threaded connection
- bottom extrusion reduces surface contact area with the bone

K-wire holes

- provisional plate positioning
- facilitated plate positioning over epiphyseal plate

Multiple screw options

- non-locking and locking screw gives multiple configuration for individual cases



Hinged plate version

Chamfered plate border

K-wire hole

Multiple screw options